

# **RCS...**

## ***Answering Challenges, Redefining the Future***

McGuire Hall

December 14, 2011

# ***Richmond Community Schools Master Planning***

**To support the vision of a high performing district that brings pride to the community.**

# ***The Challenge...***

- **A looming budget deficit**
- **Class size**
- **Academic support services**
- **Enrichment opportunities**
- **Stability**
- **Flexibility**
- **Parental choice**
- **Tax rate**

# *Master Planning Communication*

- Community survey
- 9/14 Board Meeting
- 9/28 Board Meeting
- 10/6 Radio Troy
- 10/12 Board Meeting
- 10/13 Focus Group
- 10/19 P-I Editorial Brd.
- 10/24 Business Reps
- 10/26 Board Meeting
- 11/3 P-I Live
- 11/9 Board Meeting
- 11/16 Special Board Mtg
- 11/23 Mtg w/Logos Staff
- 11/23 Board Meeting
- 12/5 C.R. R. Staff Mtg
- 12/5 IUE Represent. Mtg
- 12/6 Literary Society Mtg
- 12/7 Parent Leader Group
- 12/8 Corp Adm Mtg.
- 12/8 H.H. Staff Mtg.
- 12/9 C.R.R. PTO Mtg.
- 12/13 C.O. Staff Mtg
- 12/13 Operations Mtg
- 12/14 RCS Staff Mtg
- 12/14 Board Mtg.
- Website Comments

# *Plan Design...*

# ***Redefines...***

- **The Elementary Experience**
- **The Intermediate Years**
- **Support Services**

# **Six PK-4 Buildings**

***Charles***

***Crestdale***

***Elizabeth Starr Academy***

***Fairview***

***Vaile***

***Westview***

# Features...

- Preschool in each elementary building
- Stable, workable class sizes
- Support services
- Critical numbers for specialized programs
  - Enrichment
  - Remediation

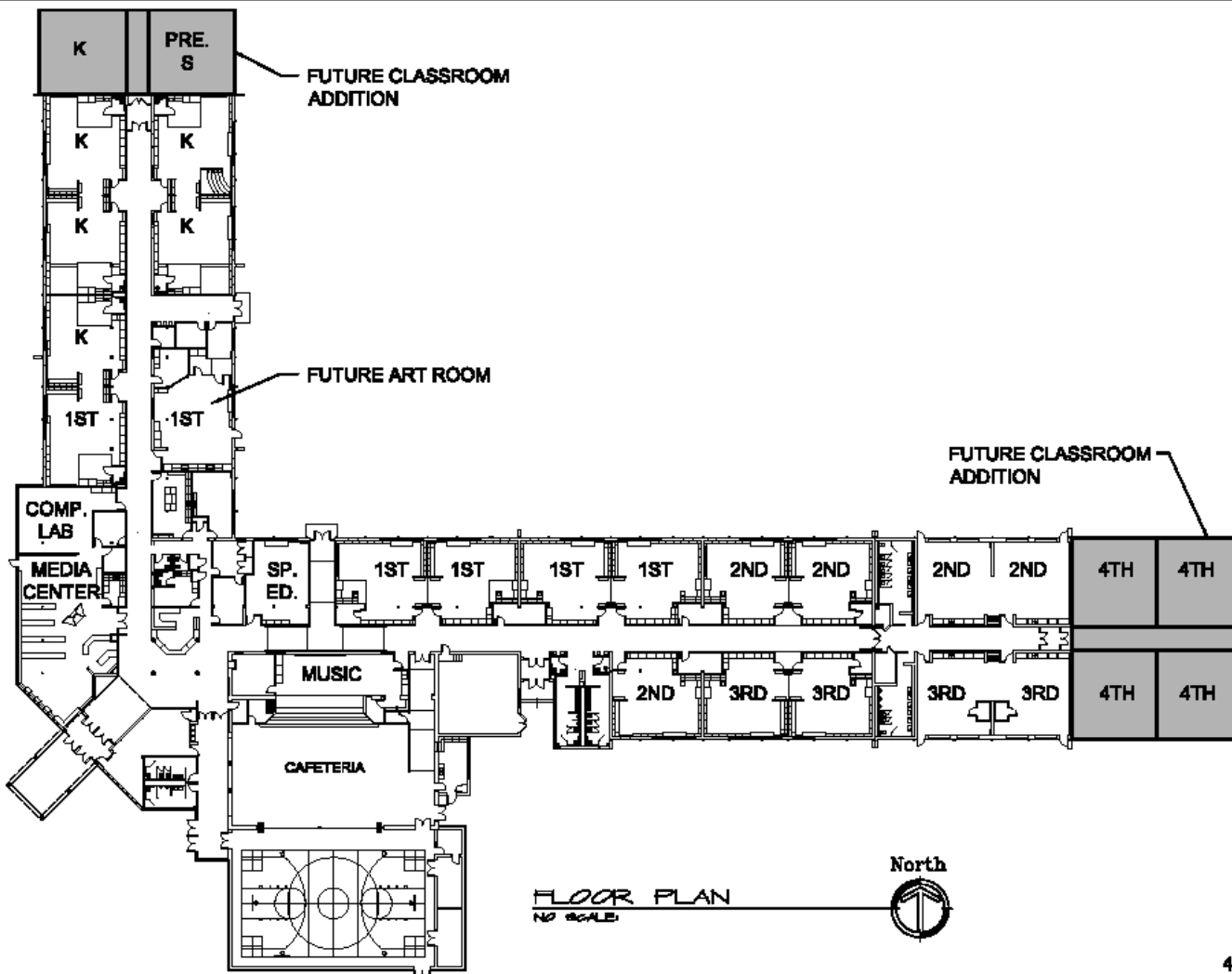
# Two 5-8 Buildings

*Test*

*Dennis*

# *Features...*

- Grades 5 and 6
  - Separate
  - Looped
- Exceptional Education Programs at Hibberd
  - Early College Preparatory Academy
  - Life Skills
  - Logos Lab School



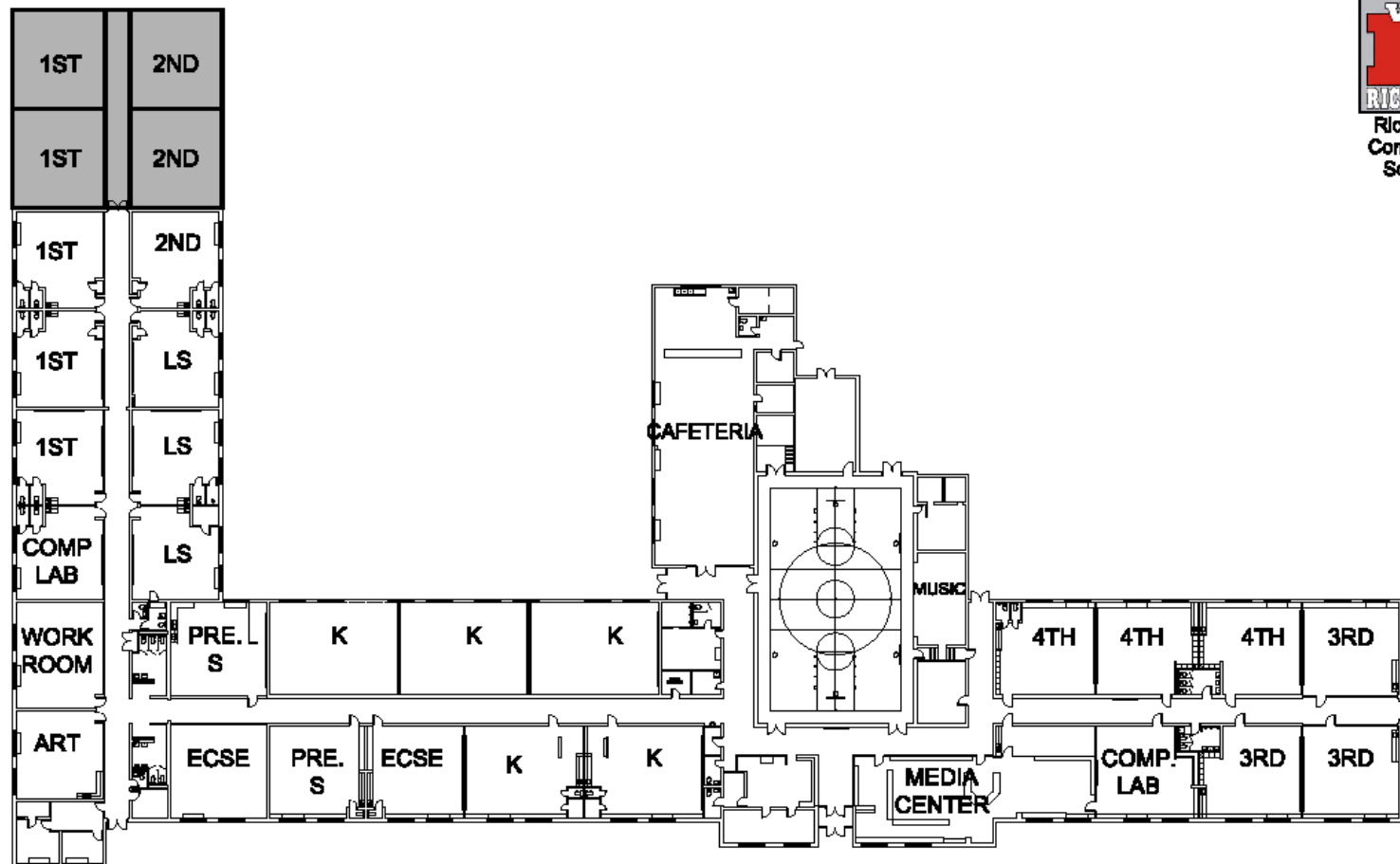
FLOOR PLAN  
 NO SCALE



CHARLES  
 K - 4  
 495 STUDENTS



Richmond  
Community  
Schools



FLOOR PLAN  
NO SCALE



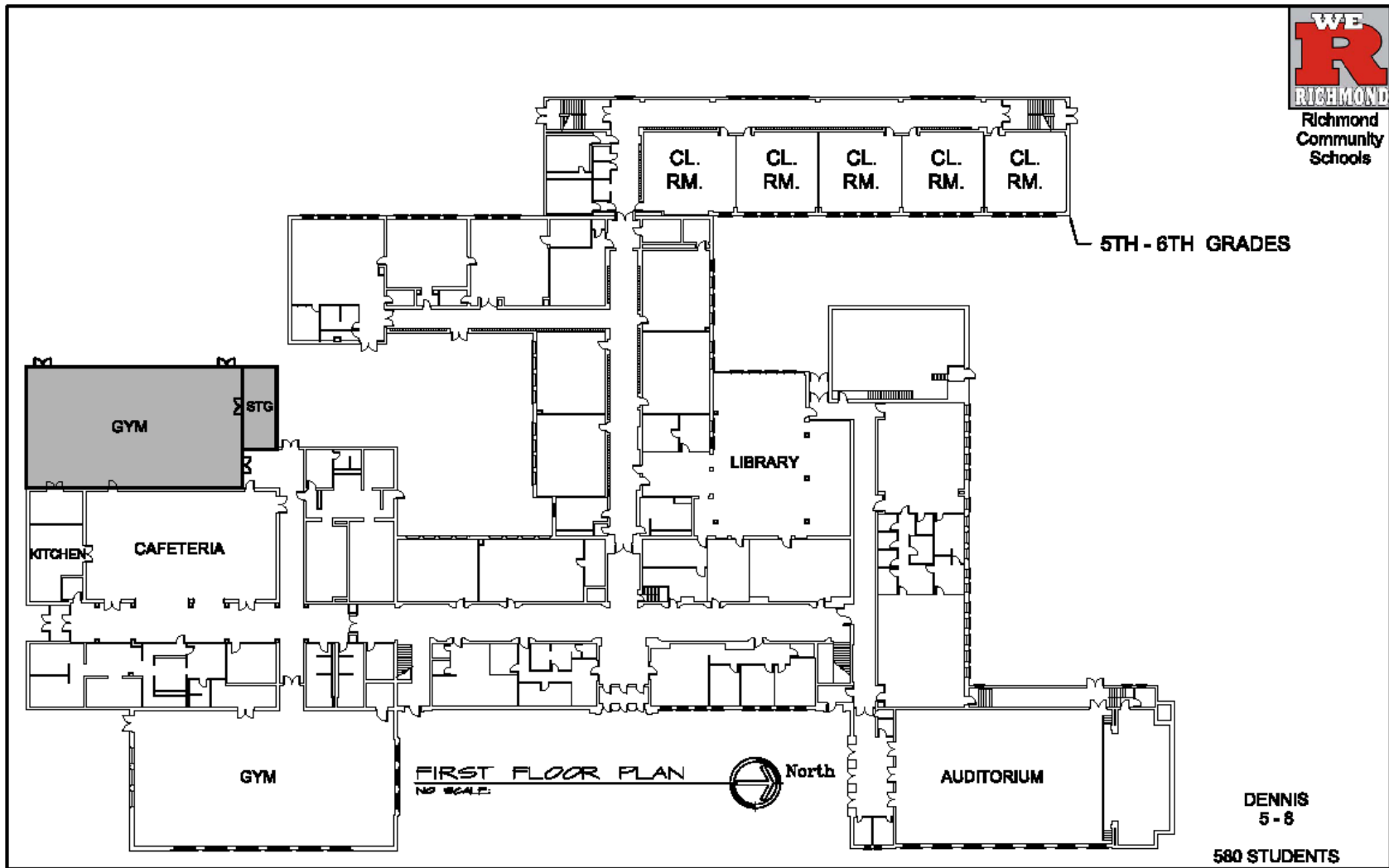
North

CRESDALE  
K - 4

346 STUDENTS



Richmond  
Community  
Schools



5TH - 6TH GRADES

GYM

STG

KITCHEN

CAFETERIA

LIBRARY

GYM

FIRST FLOOR PLAN  
NO SCALE.

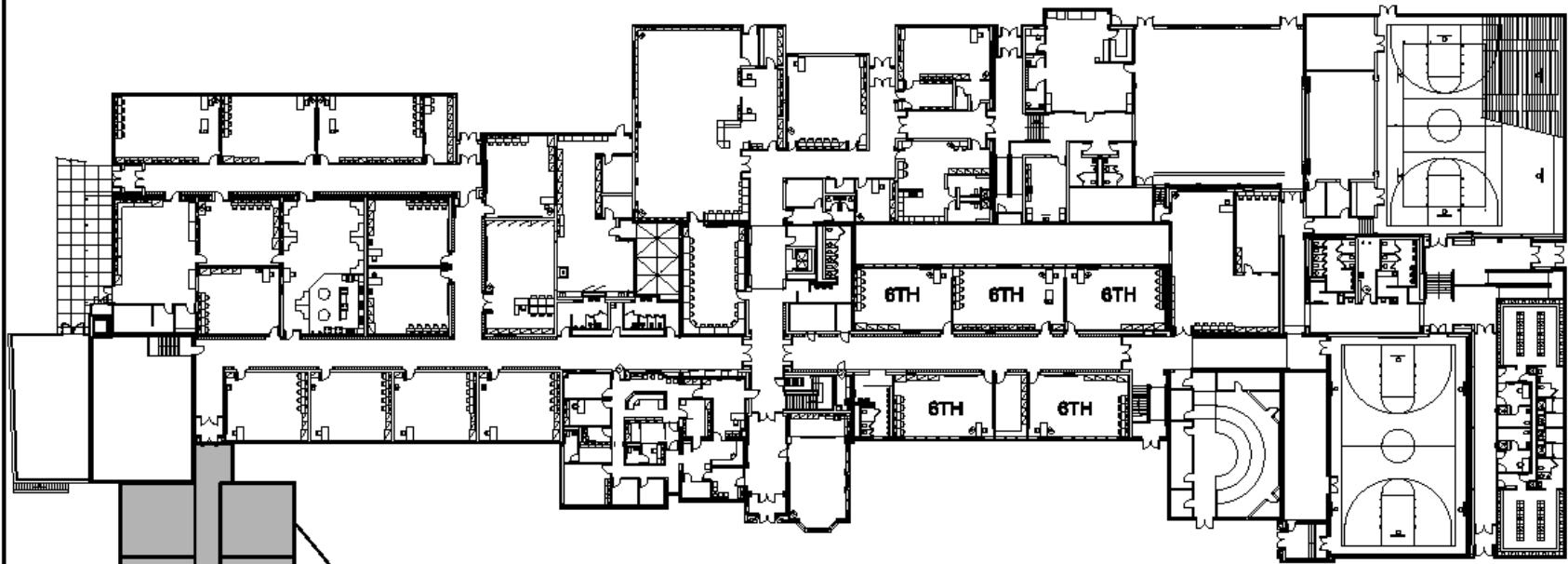


North

AUDITORIUM

DENNIS  
5 - 8

580 STUDENTS



FUTURE  
CLASSROOM  
ADDITION

FIRST FLOOR PLAN  
NO SCALE



TEST  
5-8

661 STUDENTS

# *Community Youth Services*

- Relocation to Baxter from Richmond State Hospital
- Enhanced services
- Expanded services to include K-12 regular education

# ***Building Closures...***

- C.R. Richardson Elementary
- Paul E. Garrison Elementary
- Highland Heights Elementary

# ***ESTIMATED RENOVATION COSTS***

<b>Garrison</b>	<b>\$4,561,590.00</b>
<b>Highland Heights</b>	<b>\$4,561,590.00</b>
<b>C. R. Richardson</b>	<b><u>\$4,942,450.00</u></b>
<b>Total Estimated Cost</b>	<b>\$14,065,630.00</b>

# *Answers the Challenge...*

- **Eliminates a looming budget deficit**
- **Protects class size**
- **Preserves academic support services**
- **Enhances enrichment opportunities**
- **Provides for stability**
- **Establishes flexibility**
- **Honors parental choice**
- **Protects the tax rate**