

RICHMOND COMMUNITY SCHOOLS
**EDUCATIONAL FACILITY
MASTER PLAN**



Board Meeting

December 13, 2017



Progress to Date

- Educational Visioning
- Historic Analysis
- Demographic Study
- Capacity Analysis
- Preliminary Building Evaluations
- Initial Community Input Sessions
- PK-12 Efficiency Options



In progress / Yet to do

- High School Facility Improvement Plan
- District wide Facility Improvement Plan
- Capital Cost Options
- Second round of Community Meetings
- Compilation of Results
- Final Report



Building Capacities

RICHMOND COMMUNITY SCHOOLS



Elementary Schools Grades PK-4	Grade level Classrooms	Target Average Students per Class	Capacity	2017-2018 Enrollment	Percent Capacity	Delta
Crestdale	26	18.3 (1)	476	370 (2)	78%	106
Fairview	18	22	396	307	78%	89
Westview	16	22	352	365	104%	-13
Vaile	17	22	374	288	77%	86
Starr	16	22	352	316	90%	36
Charles	20	22	440	494	112%	-54
Totals			2390	2140 (3)		250

- (1) Accounts for impact of smaller class size in Life Skills classrooms
(20 regular classroom @ 22 students and 6 Life Skill classrooms @ 6 students)
- (2) Includes (30) Life Skill Students
- (3) Does not include (21) CYS students
- (3) (54) Hibberd 3rd and 4th grade (Logos) students included in Hibberd numbers below

RICHMOND COMMUNITY SCHOOLS



Intermediate Schools Grades 5-8	Grade level Classrooms	Target Average Students per Class	Capacity	2017-2018 Enrollment	Percent Capacity	Delta
Dennis	34	25	850	542	64%	308
Test	29	25	725	598	82%	127
Hibberd	22	20.7	455	289(4)	63%	166.4
Totals			2030	1429		601

(4) Includes (33) Life Skill students and (54) 3rd and 4th grade students (Logos)

(4) Does not include (25) CYS students

(17 regular classrooms @ 25 students and 5 Life Skill classrooms @ 6 students)

Richmond High School Grades 9-12

High School Grades 9-12	Total available teaching stations	Current students per teaching station	Raw Capacity	Efficiency Factor	Real Capacity	Current Enrollment	Delta
RHS	121	17.87	2162	86%	1859	1306 (1)	553 students

(1) Includes (12) Life Skill students

(1) Does not include (24) CYS students

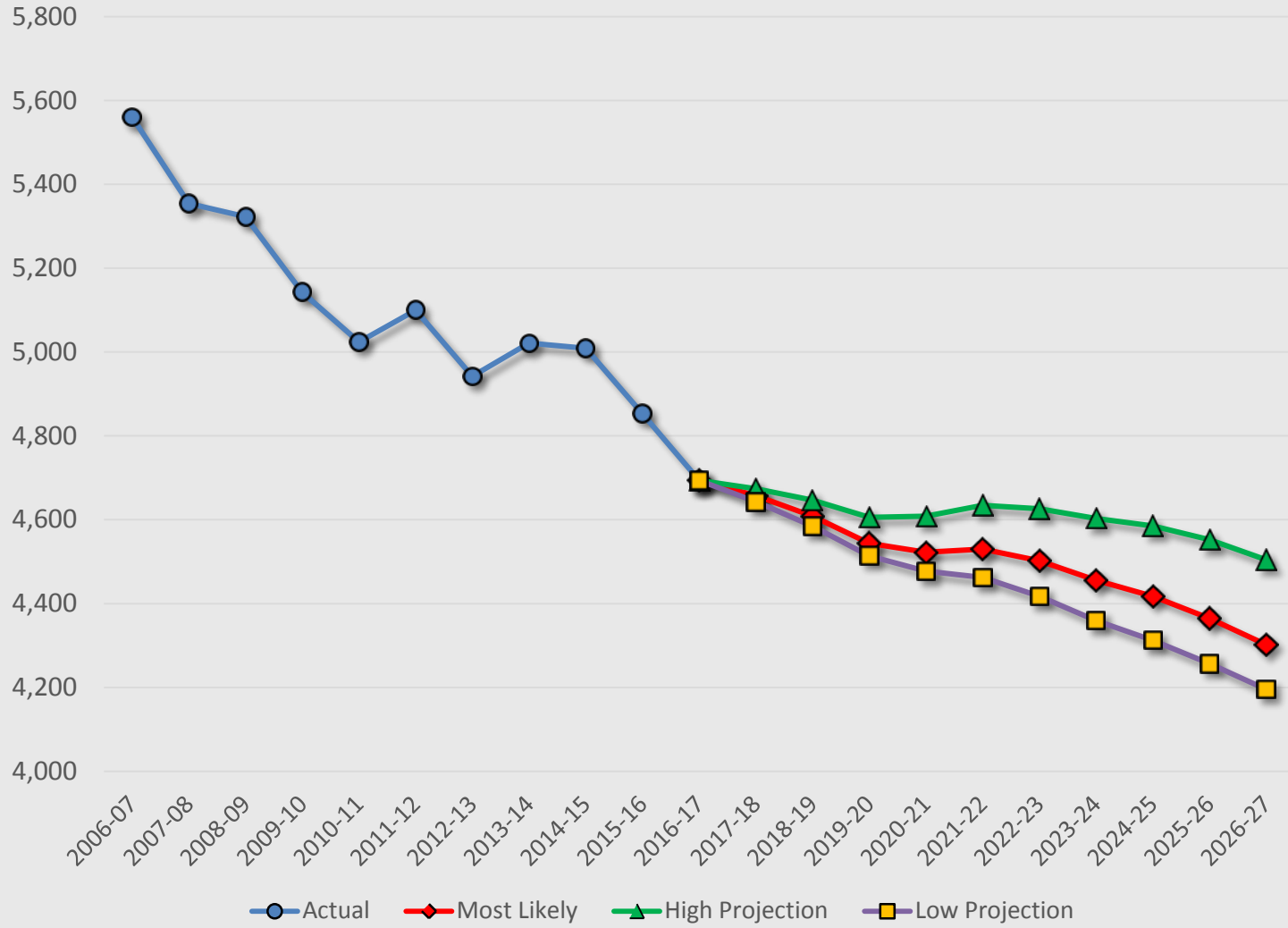
(1) Includes (12) Wernle students



Demographic Trends



Enrollment Projection





Efficiency Options

RICHMOND COMMUNITY SCHOOLS



	Option A No Building Closures PK-4/5-8/9-12	Option B1 Close Hibberd PK-4/5-8/9-12	Option B2 Close Vaile Convert Hibberd PK-4/5-8/9-12	Option B3 Close Starr Convert Hibberd PK-4/5-8/9-12	Option C Close Hibberd Close Vaile Close Starr PK-3/4-7/8-12
Elementary Capacity	2390	2390	2412	2434	1760
Elementary Enrollment	2140	2194	2194	2194	1777
Elementary Efficiency	90%	92%	91%	90%	101%
Intermediate Capacity	2030	1575	1575	1575	1575
Intermediate Enrollment	1429	1375	1375	1375	1453
Intermediate Efficiency	70%	87%	87%	87%	92%
High School Capacity	1865	1865	1865	1865	1865
High School Enrollment	1306	1306	1306	1306	1645
High School Efficiency	70%	70%	70%	70%	88%

(Does not include CYS enrollment in calculations)



	Option A No Building Closures PK-4/5-8/9-12
Elementary Capacity	2390
Elementary Enrollment	2140
Elementary Efficiency	90%
Intermediate Capacity	2030
Intermediate Enrollment	1429
Intermediate Efficiency	70%
High School Capacity	1865
High School Enrollment	1306
High School Efficiency	70%

Option A: No building closures

- Redistricting to address overcrowding at elementary buildings
- Program review and revision
- Review grade configurations at intermediate level

Considerations:

- Cost savings from closing a building will only be fully realized by removing the building and associated cost from our roll.
- Remodel of RHS will result in fewer classrooms/teaching stations
 - Similar to the Test remodel, we may need to go three classrooms to two classrooms in many places.
 - This will increase the utilization of classroom space each period.
- Transportation cost of grade reconfiguration



Option B1: Close Hibberd

- Savings experienced from removing a building from our roll.
- Redistricting elementary boundaries
- Program review and revision
- Review grade configurations at intermediate level

Considerations:

- Cost of creating appropriate setting for intermediate life skills program
- Redistrict elementary school boundaries (transportation costs)
- Transportation cost of grade reconfiguration

	Option B1 Close Hibberd PK-4/5-8/9-12
Elementary Capacity	2390
Elementary Enrollment	2194
Elementary Efficiency	92%
Intermediate Capacity	1575
Intermediate Enrollment	1375
Intermediate Efficiency	87%
High School Capacity	1865
High School Enrollment	1306
High School Efficiency	70%



Option B2: Close Vaile

- Savings experienced from removing a building from our roll.
- Redistricting elementary boundaries
- Program review and revision
- Review grade configurations at intermediate level

Considerations:

- Costs associated with converting Hibberd to an elementary school
- Cost of creating appropriate setting for intermediate life skills program
- Redistrict elementary school boundaries (transportation costs)
- Transportation cost of grade reconfiguration

	Option B2 Close Vaile Convert Hibberd PK-4/5-8/9-12
Elementary Capacity	2412
Elementary Enrollment	2194
Elementary Efficiency	91%
Intermediate Capacity	1575
Intermediate Enrollment	1375
Intermediate Efficiency	87%
High School Capacity	1865
High School Enrollment	1306
High School Efficiency	70%



Option B3: Close Starr

- Savings experienced from removing a building from our roll.
- Redistricting elementary boundaries
- Program review and revision
- Review grade configurations at intermediate level

Considerations:

- Cost associated with converting Hibberd to an elementary school
- Cost of creating appropriate setting for intermediate life skills program
- Redistrict elementary school boundaries (transportation costs)
- Transportation cost of grade reconfiguration

	Option B3 Close Starr Convert Hibberd PK-4/5-8/9-12
Elementary Capacity	2434
Elementary Enrollment	2194
Elementary Efficiency	90%
Intermediate Capacity	1575
Intermediate Enrollment	1375
Intermediate Efficiency	87%
High School Capacity	1865
High School Enrollment	1306
High School Efficiency	70%



	Option C Close Hibberd Close Vaile Close Starr PK-3/4-7/8-12
Elementary Capacity	1760
Elementary Enrollment	1777
Elementary Efficiency	101%
Intermediate Capacity	1575
Intermediate Enrollment	1453
Intermediate Efficiency	92%
High School Capacity	1865
High School Enrollment	1645
High School Efficiency	88%

Option C: Close Hibberd, Vaile, and Starr
High school becomes an 8 – 12 building

- Savings experienced from removing three buildings from our roll.
- Elementary buildings become PK – 3
- Intermediate buildings become grades 4 – 7
- Maximizes the use of building capacities
- Program review and revision

Considerations:

- Every building is utilized at or close to capacity
- Transportation costs
- Major upheaval of grade configurations
- Cost of creating appropriate setting for intermediate life skills program

RICHMOND COMMUNITY SCHOOLS



	Option A No Building Closures PK-4/5-8/9-12	Option B1 Close Hibberd PK-4/5-8/9-12	Option B2 Close Vaile Convert Hibberd PK-4/5-8/9-12	Option B3 Close Starr Convert Hibberd PK-4/5-8/9-12	Option C Close Hibberd Close Vaile Close Starr PK-3/4-7/8-12
Elementary Capacity	2390	2390	2412	2434	1760
Elementary Enrollment	2140	2194	2194	2194	1777
Elementary Efficiency	90%	92%	91%	90%	101%
Intermediate Capacity	2030	1575	1575	1575	1575
Intermediate Enrollment	1429	1375	1375	1375	1453
Intermediate Efficiency	70%	87%	87%	87%	92%
High School Capacity	1865	1865	1865	1865	1865
High School Enrollment	1306	1306	1306	1306	1645
High School Efficiency	70%	70%	70%	70%	88%

(Does not include CYS enrollment in calculations)